

### 3.1.3 NBIS Bridge Length

The *FHWA Recording and Coding Guide for the Structure Inventory and Appraisal of the Nation's Bridges* also states, in accordance with Item 112 – NBIS Bridge Length, that the minimum length for a structure to be considered a bridge for National Bridge Inspection Standards purposes, is to be 20 feet (see Figure 3.1.2).

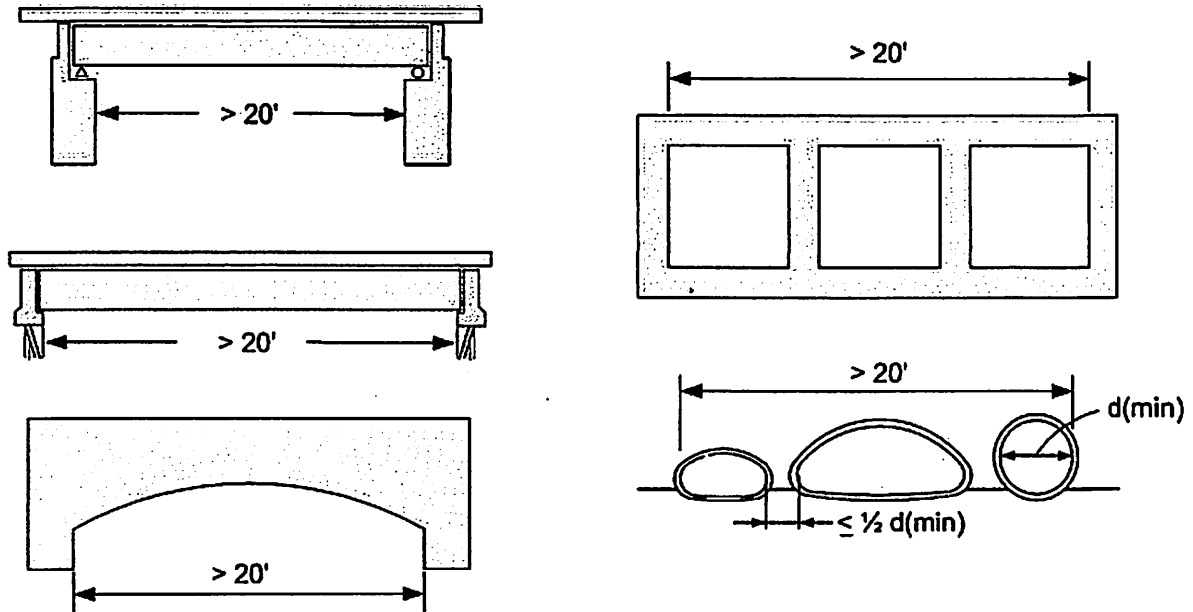


Figure 3.1.2 NBIS Bridge Length (Coding Guide Item 112)

23 CFR Part 650.305 Definitions gives the definition of a bridge as it applies to the NBIS regulations: A bridge is a structure including supports erected over a depression or an obstruction, such as water, highway, or railway, and having a track or passageway for carrying traffic or other moving loads, and having an opening measured along the center of the roadway of more than 20 feet between undercopings of abutments or spring lines of arches, or extreme ends of openings for multiple boxes; it may also include multiple pipes, where the clear distance between openings is less than half of the smaller contiguous opening.

### 3.1.4 Major Bridge Components

A thorough and complete bridge inspection is dependent upon the bridge inspector's ability to identify and understand the function of the major bridge components and their elements. Most bridges can be divided into three basic parts or components (see Figure 3.1.3):

- Deck
- Superstructure
- Substructure

1. The first part of the report...

2. The second part of the report...

3. The third part of the report...

4. The fourth part of the report...

5. The fifth part of the report...

6. The sixth part of the report...

7. The seventh part of the report...

8. The eighth part of the report...

9. The ninth part of the report...

10. The tenth part of the report...

11. The eleventh part of the report...

12. The twelfth part of the report...

13. The thirteenth part of the report...

14. The fourteenth part of the report...

15. The fifteenth part of the report...

16. The sixteenth part of the report...

17. The seventeenth part of the report...

18. The eighteenth part of the report...

19. The nineteenth part of the report...

20. The twentieth part of the report...

21. The twenty-first part of the report...

22. The twenty-second part of the report...

23. The twenty-third part of the report...

24. The twenty-fourth part of the report...

25. The twenty-fifth part of the report...

26. The twenty-sixth part of the report...

27. The twenty-seventh part of the report...

28. The twenty-eighth part of the report...

29. The twenty-ninth part of the report...

30. The thirtieth part of the report...

